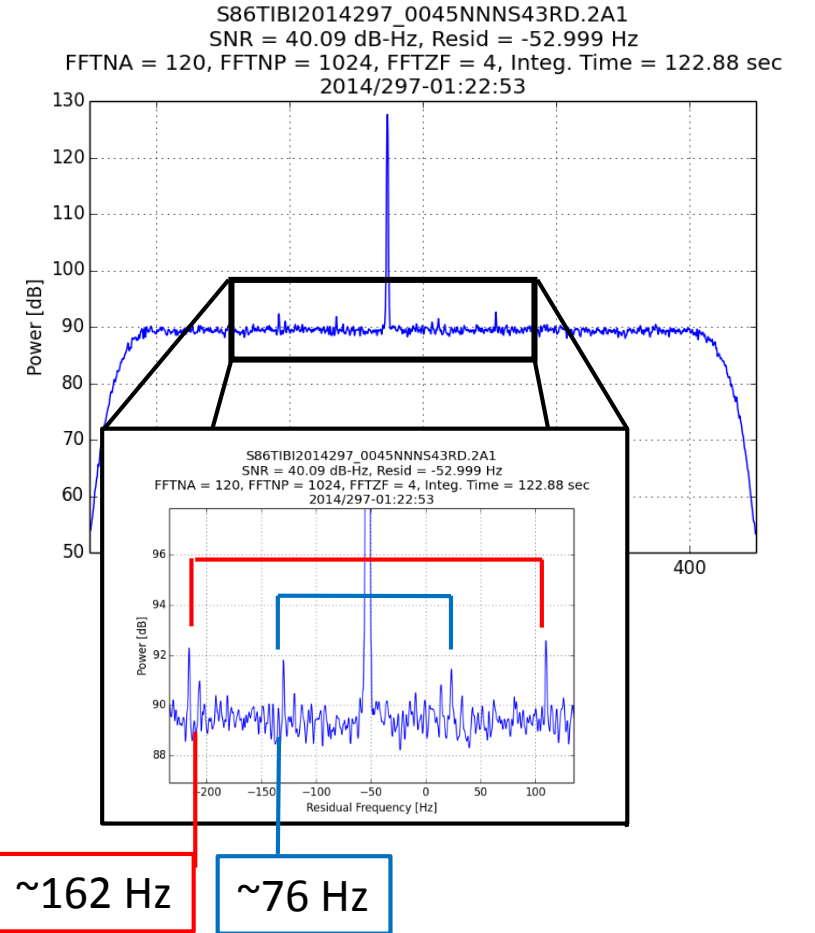
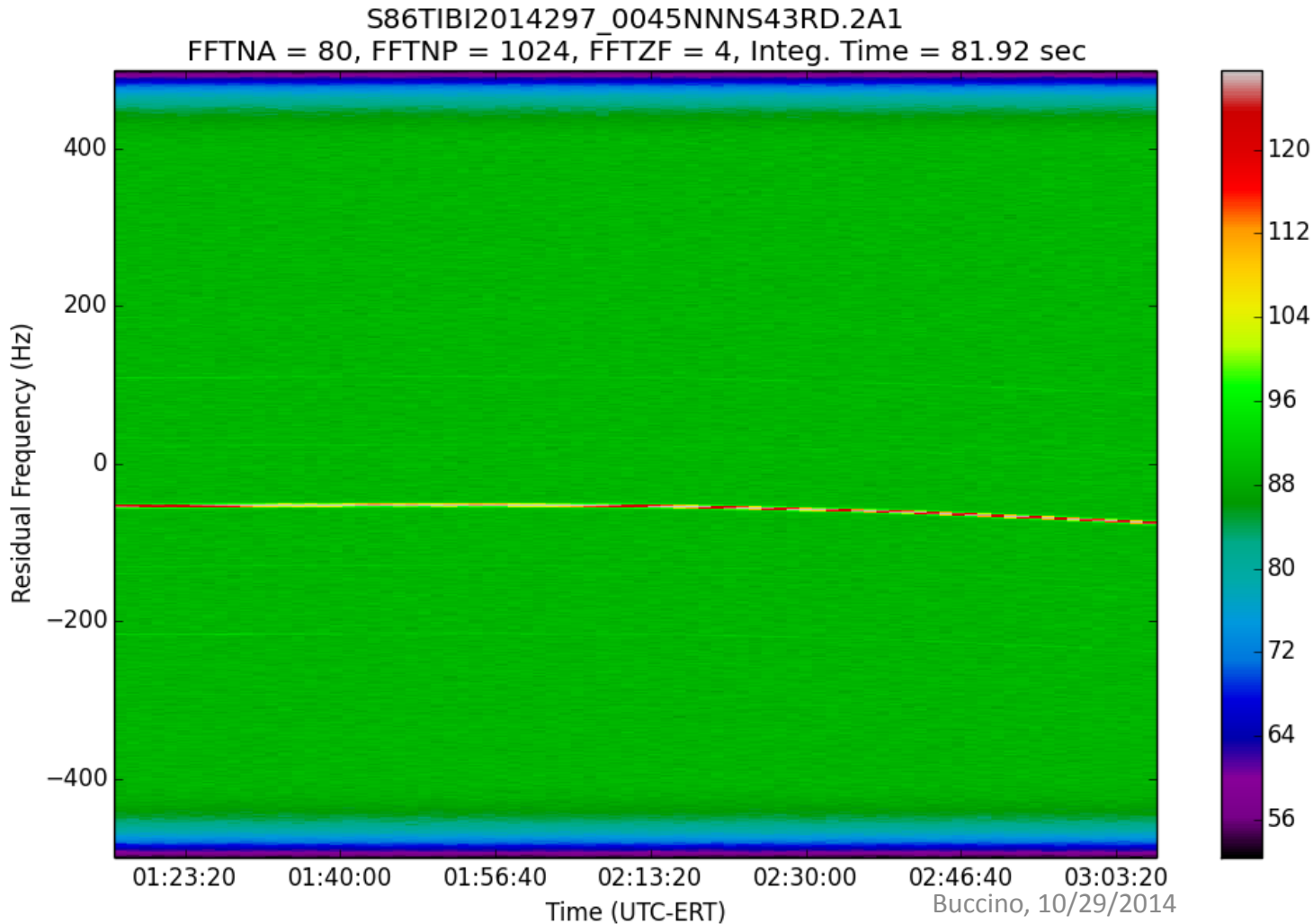


DSS-43 S-band Spurs

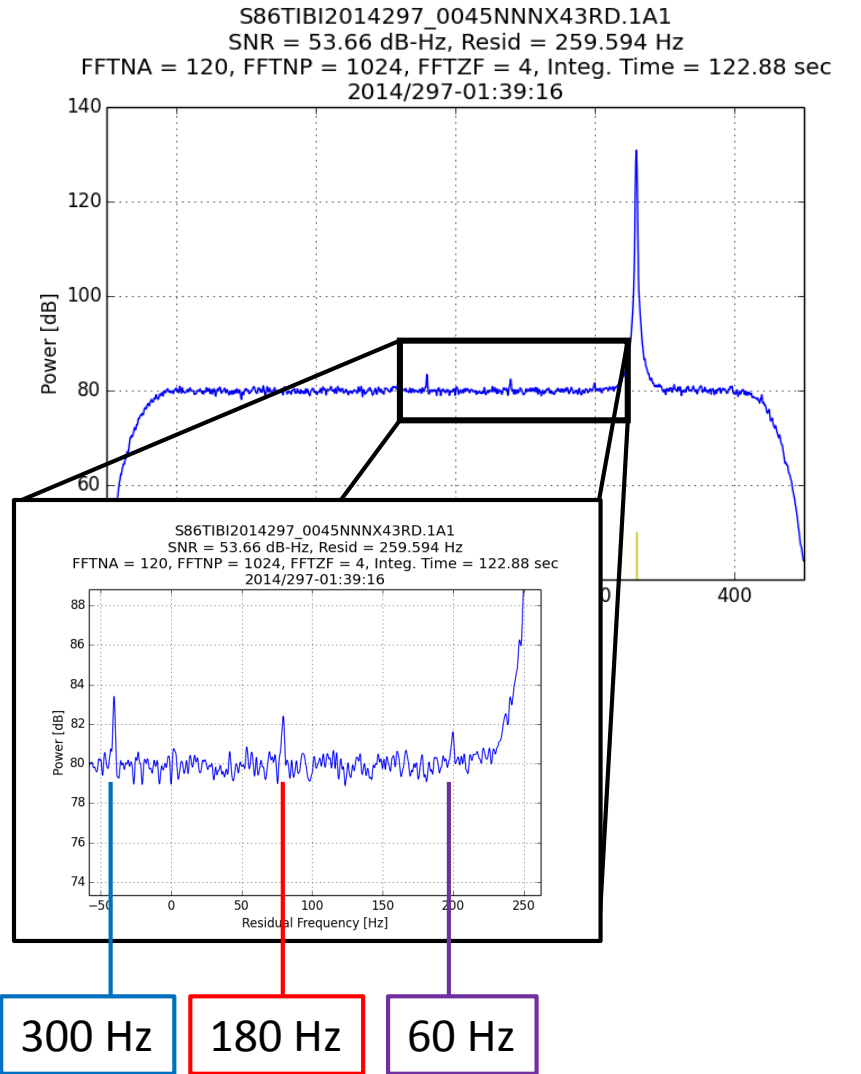
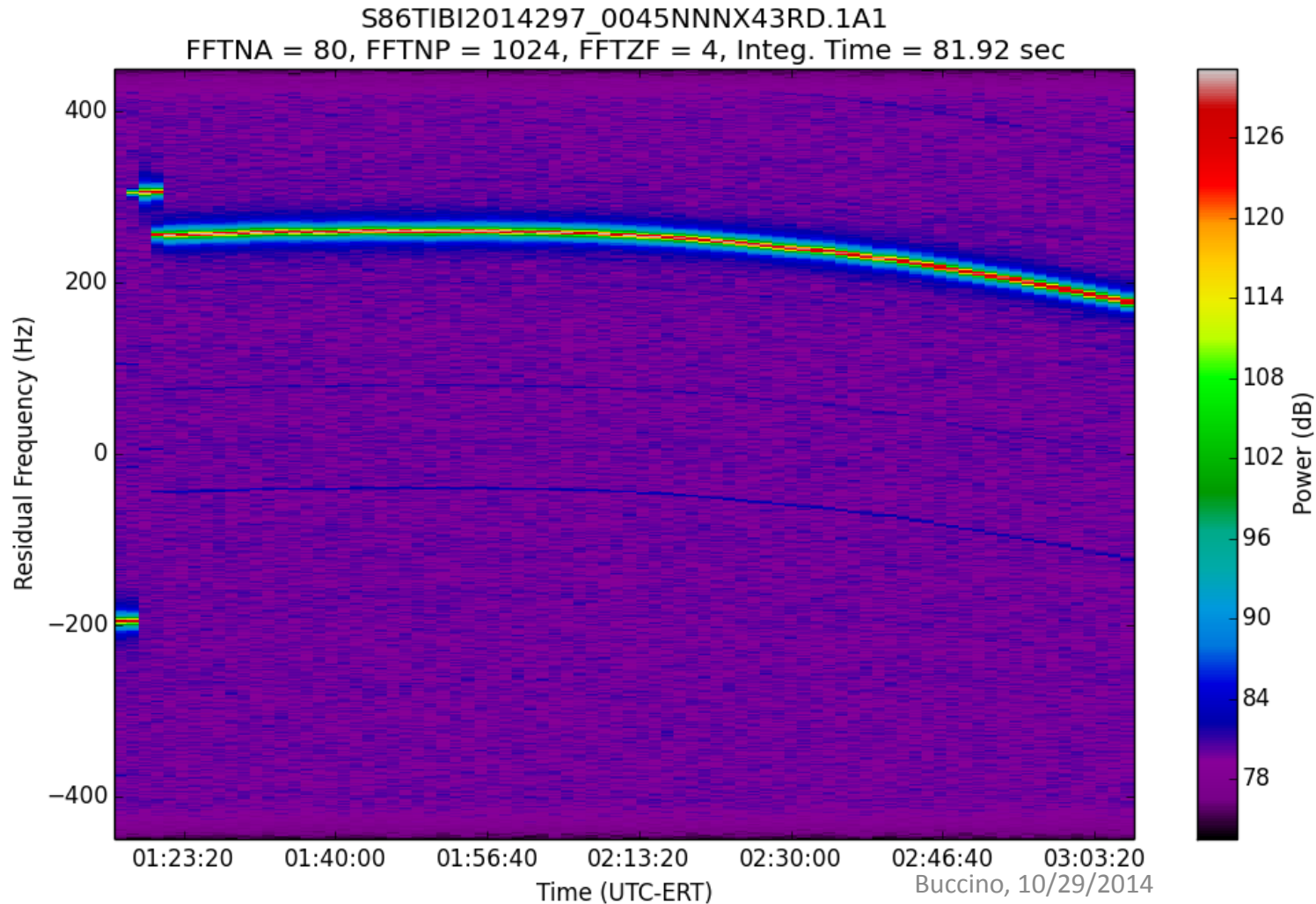
T106 Ingress Bistatic Baseline, 2014/297-01:14 – 03:08



- Approx +/- 162 Hz, ~2-3 dB above noise
- Approx +/- 76 Hz, ~1-2 dB above noise
 - 76 Hz spurs have multiple peaks
 - 76 Hz is the center peak
- These spurs are also present in the 2014/296 Bistatic ORT over DSS-43!

DSS-43 X-band Spurs

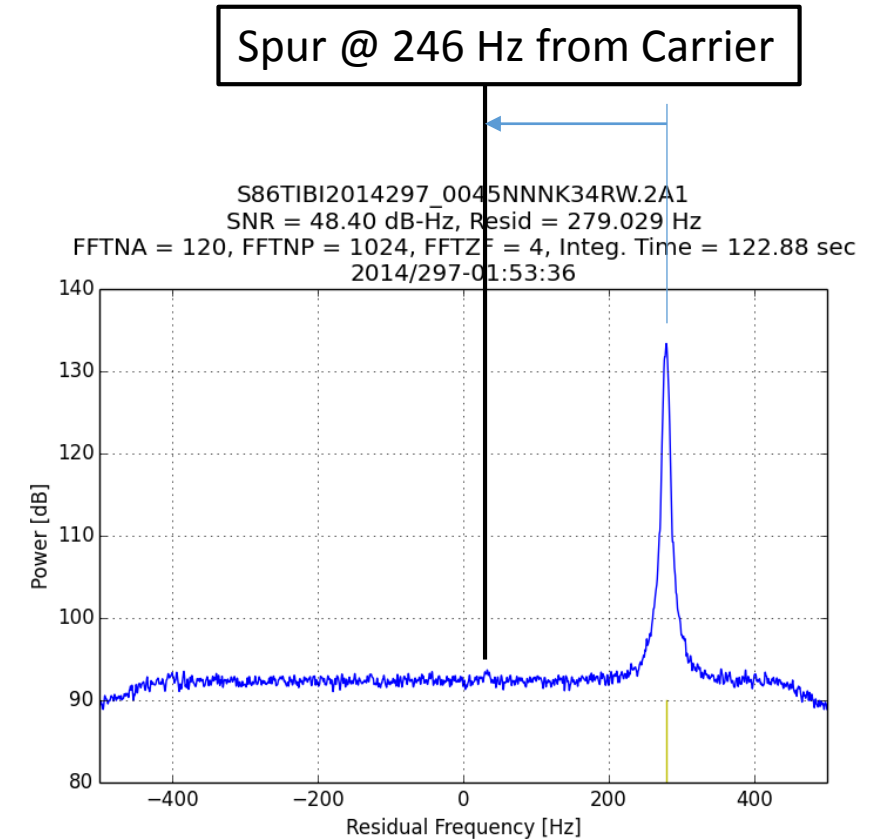
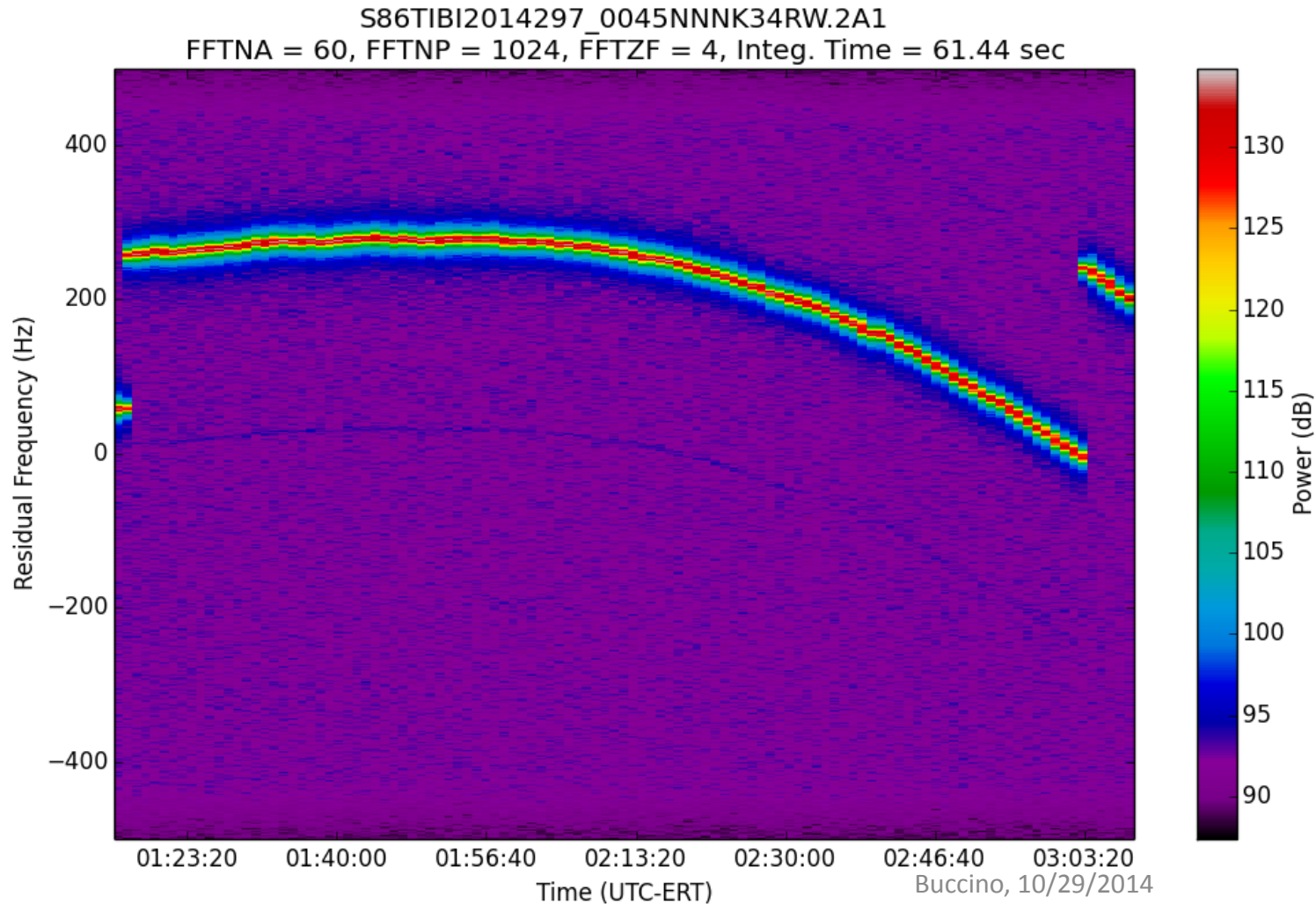
T106 Ingress Bistatic Baseline, 2014/297-01:14 – 03:08



- **+/- 300 Hz** spurs ~3-4 dB above noise
- **+/- 180 Hz** spurs ~2-3 dB above noise
- **+/- 60 Hz** spurs ~1-2 dB above noise

DSS-34 Ka-band Spurs

T106 Ingress Bistatic Baseline, 2014/297-01:14 – 03:08



- **+/-246 Hz** spurs in 1-way
- Very weak (~1-2 dB above noise)
- AUX OSC drift causes peak skewing at longer integration times, somewhat well behaved ~01:30-02:00